



Odisha Forest Development Corporation Limited

**Tender for Turnkey Construction of Honey Processing Units and Staff Barrack at Jajpur Road, Odisha**

Regd. Off.: A/84, Kharavel Nagar, Unit-III, Bhubaneswar, Odisha, PIN-751001,

Tele-0674-2534680, FAX-0674-2534689, [Email-general@odishafdc.com](mailto:Email-general@odishafdc.com),

Website: [www.odishafdc.com](http://www.odishafdc.com)

# Odisha Forest Development Corporation Limited



(A Govt of Odisha Undertaking)

CIN-U02005OR1962SGC000446

Regd. Off: A/84 Kharavel Nagar, Unit-III, Bhubaneswar, Odisha, PIN751001

Telephone:-0674-2534086, 2534269 Fax: 0674-2535934

[website: [www.odishafdc.com](http://www.odishafdc.com) E-mail ID: [general@odishafdc.com](mailto:general@odishafdc.com)]

## Tender for Turnkey Construction of Honey Processing Units and Staff Barrack at Jajpur Road, Odisha

No.: 11838

Date: 01.07.2017

Sealed quotation is invited from the eligible Contractors Odisha for the Turnkey Construction Project for construction of Pre-engineered Plant Building, water supply and sewerage system, external and Internal Electrification work for the proposed Honey Processing Plant, RTS Juice Manufacturing Plant and R.O Plant and staff Barrack as per details specified in the Tender Documents. The Bid documents which include eligibility criteria, “Technical Specifications”, various conditions of contract, formats, etc. can be downloaded from the Corporation’s website ([www.odishafdc.com](http://www.odishafdc.com)) w.e.f.05-07.2017. Bidders should submit their bid proposal/ application along with all supporting documents complete in all aspect at Corporate Office, OFDC Ltd at A//84, Kharavel Nagar, Unit-III, Bhubaneswar, Odisha, PIN-751001 in prescribed format on or before **21<sup>st</sup> July 2017 upto 4.00 p.m.** A pre-bid meeting will be held on **11<sup>th</sup> July 2017** at 3.00p.m to clarify the queries of the prospective bidders in relation to the tender. The Techno-Commercial bids will be opened on **22<sup>nd</sup> July 2017 at 11.30 a.min** presence of authorised representatives of bidders who wish to be present. Bid proposals received without or lesser than the prescribed Tender Fee and EMD will not be considered and will be outrightly rejected. OFDC reserves the right to modify, amend or supplement this Tender document including all formats and Annexures with due notification in this regard in the OFDC’s website [www.odishafdc.com](http://www.odishafdc.com) only.

Sd/-  
Managing Director

**DISCLAMIER:**

1. Though adequate care has been taken while preparing the Tender document, the Bidders/Applicants shall satisfy themselves that the document is complete in all respects. Intimation of any discrepancy shall be given to this office immediately. If no intimation is received from any Bidder before 3 days of due date of submission of completed tender, it shall be considered that the Tender document is complete in all respects and has been received by the Bidder.

2. OFDC reserves the right to modify, amend or supplement this tender document including all formats and Annexures.

3. While this Tender has been prepared in good faith, neither OFDC nor its employees or advisors make any representation or warranty, express or implied, or accept any responsibility or liability, whatsoever, in respect of any statements or omissions herein, or the accuracy, completeness or reliability of information, and shall incur no liability under any law, statute, rules or regulations as to the accuracy, reliability or completeness of this Tender, even if any loss or damage is caused by any act or omission on their part.

INTRODUCTION, BID DETAILS AND INSTRUCTIONS TO THE BIDDERS  
Part-I

**1. Introduction**

- 1.1 Odisha Forest Development Corporation Ltd, a Government of Odisha undertaking is one of the oldest and first of its kind forest Corporation in the Country incorporated in the year 1962. It engages trading of Timber, Kendu Leaf, Bamboo obtained from the Forest Department, Government of Odisha. OFDC intends to set up a Honey Processing Plant, RTS Plant in its premises at Jajpur Road, Odisha
- 1.2 OFDC Ltd which expression shall also include its successors and permitted assigns, hereby invites interested companies/ firms to participate in the bidding process for the selection of Successful Bidder(s) for implementation of grid-connected roof top Solar Photovoltaic.
- 1.3 Throughout these bidding documents, the terms 'bid' and 'tender' and their derivatives (bidder, tenderer, bid/ tender, bidding/ tendering, etc.) are synonymous. Contractor means the selected bidder for the work.
- 1.4 The Bidder is advised to read carefully all instructions and conditions appearing in this document and understand them fully. All information and documents required as per the bid document must be furnished. Failure to provide the information and / or documents as required may render the bid technically unacceptable.
- 1.5 The bidder shall be deemed to have examined the bid document, to have obtained his own information in all matters whatsoever that might affect the carrying out the works in line with the scope of work specified elsewhere in the document at the offered rates and to have satisfied himself to the sufficiency of his bid.
- 1.6 The bidder shall be deemed to know the scope, nature and magnitude of the works and requirement of materials, equipment, tools and labour involved, wage structures and as to what all works he has to complete in accordance with the bid documents irrespective of any defects, omissions or errors that may be found in the bid documents.
- 1.7 The bidder shall bear all costs associated with the preparation and submission of his Bid, and OFDC will in no case be responsible and liable for those costs.
- 1.8 The Bidder, at the Bidder's own responsibility and risk is encouraged to visit and examine the Site of Works and its surroundings and obtain all information that may be necessary for preparing the Bid and entering into a contract for construction of the Works. The costs of visiting the Site shall be at the Bidder's own expense.

2. **Tender Document Fees:** The tenderer/bidder is to pay non-refundable tender document fees of Rs10,500/-(Rupees Ten Thousand Five

Hundred) towards cost of Tender in shape of Bank Draft drawn from any nationalized/scheduled bank in favour of the Managing Director, OFDC Ltd, Payable at Bhubaneswar.

3. **Ernest Money Deposit(EMD):** The tenderer/bidder is required to submit EMD of Rs 5,00,000/- (Rupees Five Lakhs) in shape of Bank Draft drawn from any nationalized/scheduled bank in favour of the Managing Director, OFDC Ltd, Payable at Bhubaneswar. EMD of unsuccessful bidder will be refunded within thirty days from the date of opening of Financial Bid.

The EMD may be forfeited

- (a) If the Bidder withdraws the Bid after Bid opening during the period of Bid validity;
- (b) In the case of a successful Bidder, if the Bidder fails within the specified time limit to
  - (i) Sign the Agreement; or
  - (ii) Furnish the required Performance Security.

4. **Pre-Bid Meeting:** A pre-bid meeting will be held on **11.07.2017 at 3.00 p.m** at the Corporate Office, OFDC Ltd, at A/84 Kharavel Nagar, Bhubaneswar, Odisha, 751001 to clarify the issues and to answer questions on any matter that may be raised by the prospective Bidders through Email addressed to [general@odishafdc.com](mailto:general@odishafdc.com). The purpose of the meeting will be to clarify issues and to answer questions on any matter that may be raised at that stage. Non-attendance at the pre-bid meeting will not be a cause for disqualification of a bidder.

## 5. Amendment of Bidding Documents

- a. Before the deadline for submission of bids, OFDC may modify the bidding documents by issuing addenda.
- b. Any addendum thus issued shall only be published only in its website and will be part of the bidding documents.
- c. Amendments if any required after pre-bid meeting will be notified and will also form part of the bidding documents

## 6. Scope of Work

- 6.1 The scope of work for the bidder include complete design, drawing construction of pre-engineered Structure for the Honey Processing Plant, RTS Plant and RO Plant, Staff Barack with lavatory, internal and external Electrification, construction of internal and external Sewerage system, water supply including digging of Bore well and construction of overhead storage tank etc on a turnkey basis at Jajpur Road, Odisha.

The details of site, proposed layout and minimum standards/quality of materials to be used in the project are given in the annexure- VII & VIII for reference.

- 6.2 The contractor shall have to obtain all statutory permission from the municipal authority or other statutory authorities for construction of the above work. The Contractor will also get approval for installation of Electrical Substations from the OFDC authorities. OFDC will provide all necessary assistance and documents in relation to obtaining of all such clearances required for the above work.
- 6.3 **Completion period:** The overall completion period for the execution of this project is 6 months (including 30days of preconstruction period). If at any stage, the Project has been delayed by the acts of OFDC, nothing extra shall be payable to the Contractor. However suitable extension of time for completion of work shall be granted accordingly.

## 7. Minimum Eligibility Conditions

- 7.1 This Invitation for Bids is open to all bidders registered with the Government of Odisha or other State Governments / Government of India / MES / Railways for execution of Civil works in general and construction of Pre-engineered Building in particular. Bidders are advised to note the minimum qualification criteria specified in the "Instruction to Bidders" to qualify for the award of contract.
- 7.2 The bidder must have submitted the cost of the Tender document fees and amount of Earnest Money Deposit as required under clause- of this document.
- 7.3 The Bidder must be a registered contractor of the requisite class for taking up of the above work with estimated value of Rs2.00 crore on turnkey basis.
- 7.4 The Bidder must have successfully completed at least one similar industrial project of the value not less than Rs. 2.00 crore during last three Financial years.
- 7.5 The bidder must have accepted all the terms and conditions of the tender unconditionally and must have submitted an undertaking to that effect under the letter head of his organization.
- 7.6 The Bidder must be a Civil Contractor eligible to undertake work of the Value Rs.1 crore and above
- 7.7 The overall average turnover of the Contractor's company/firm in the last three financial years should be at least Rs. 2.00 crores (This must be the individual Company's/firm's turnover and not that of any group of company). Certificate from Chartered Accountant shall be enclosed with the offer in the proforma provided in the Annexure. There is no

need to provide entire voluminous balance sheet. Further details, if required, may be asked for the contractors after opening of technical bid.

- 7.8 The bidder should have valid GSTIN registration certificate/ Provisional Certificate. A copy of which should be enclosed.
- 7.9 The bidder shall submit a certificate that their firm has never been debarred by any Government agencies/departments/PSUs for corrupt and/or fraudulent practice. The bids of the debarred firm will be rejected out rightly.
- 7.10 Bids from Joint ventures are not acceptable.

### 8. Additional eligibility

All the Bidders should provide following details along with their documentary proof for being qualified for consideration of their proposal. A minimum 50% of the total score is to be secured for consideration of the bid.

Sl. No	Description	Marks
1	Total monetary value of Turnkey Civil Engineering construction work performed for each of the last Three financial years including FY 2016-17  (i) Rs.2 crore to Rs.4.00 cr (ii) Rs4.00 crore to Rs.6.00crore (iii) More than 6 crore	  5 10 15
2	Average Turnover for last Three years  i. Rs 2.00 Crore to Rs5 Crore. ii. More than Rs5 crore but less than Rs8.00 crore iii. More than Rs8.00 crore	  5 10 15
3	Presentation of Scheme	50
5	For Any Additional Adoption of Quick Construction Technology or Cost Effective technology.	20

### 9. Sub-contracting

The bidder may sub-contract any portion of work, up to a limit specified in Contract, with the approval of the OFDC in writing. Sub-contracting does not alter the Contractor's obligations. Further Sub-contractors' experience and resources shall not -be taken into account in determining the bidder's compliance with the qualifying criteria

## 10. Preparation of Bid

The bid to be submitted by the bidder shall be in two separate parts:

**COVER-I** shall be named "Technical Bid" and shall comprise

- (i) Technical Bid including duly completed and signed Annexures alongwith complete Design, Drawing, Bills of Material and other technical documents supporting the eligibility and new technology proposed;
- (ii) Bank Draft evidencing payment of cost of the tender document and Bid Security
- (iii) Qualification Information and supporting documents as specified in Clause--
- (iv) Undertaking that the bid shall remain valid for the period specified in Clause -12

**COVER-II** shall be named "Financial Bid" and shall comprise

- (i) Lump sum Price Bid calculated on the basis of rates quoted for the individual items as per BoQ as submitted by the bidder;
- (ii) Payment Schedule during construction Form of Bid as specified

## 11. Bid Price

- 11.1 The contract shall be for the whole work as described in clause above, based on the Lump Sum price bid arrived on the basis of rate quoted for the individual Items as per BoQ as submitted by the Bidder.
- 11.2 The bidder shall fill the total bid price as **Lump Sum Price** (both in figures and words) for all items of works as specified in the Bid document. Corrections, if any, shall be made by crossing out, initialing, dating and rewriting.
- 11.3 All duties, taxes, and other levies payable by the Bidder under the contract, or for any other cause shall be included in the rates, prices and total Bid Price be submitted by the Bidder.
- 11.4 The lump sum bid price quoted by the bidder and the rate for the individual items or works as submitted shall be fixed for the duration of the Contract and shall not be subject to adjustment on any account.
- 11.5 The currency of bid and payment shall be quoted by the bidder entirely in Indian Rupees. All payments shall be made in Indian Rupees.
- 11.6 No claim on account of any price variation/Escalation on whatsoever ground shall be entertained at any stage of works. All rates as per Bill of Quantities (BOQ) quoted by Contractor shall be firm and fixed for entire contract period as well as extended period for completion of the works.



## **12. Bid Validity**

- 12.1 Bids shall remain valid for a period not less than **One year** after the deadline date for bid submission. A bid valid for a shorter period shall be rejected as non-responsive.
- 12.2 In exceptional circumstances, prior to expiry of the original time limit, OFDC may request that the bidders may extend the period of validity for a specified additional period. The request and the bidders' responses shall be made in writing or by cable / e-mail. A bidder may refuse the request without forfeiting his bid security. A bidder agreeing to the request will not be required or permitted to modify his bid but will be required to extend the validity of his bid security for a period of the extension.

## **13. PERFORMANCE SECURITY DEPOSIT (PSD) AND PAYMENT TERMS**

The successful bidder shall have to deposit 10 % of the total work order value within 30 days from the date of issue of work order in the shape of demand draft/bank guarantee valid upto 90 days from the expected completion date as PSD. If required, OFDC Ltd may ask to extend the validity of the PSD. The EMD of the successful bidder will be adjusted towards PSD and the bidder is required to pay deposit PSD for the balance amount if any.

## **14. BID OPENING AND EVALUATION**

### **14.1 Bid Opening**

All the bids received shall be opened in the Corporate Office, OFDC Ltd at A/84 Kharavel Nagar, Unit-III, Bhubaneswar on 21 July 2017 at 11.30 a.m in the presence of the Bidders or their representatives who choose to attend. In the event of the specified date of Bid opening being declared a holiday, the Bids will be opened at the appointed time and location on the next working day.

### **14.2 Process to be Confidential**

Information relating to the examination, clarification, evaluation, and comparison of Bids and recommendations for the award of a contract shall not be disclosed to Bidders or any other persons not officially concerned with such process until the award to the successful Bidder has been announced. Any effort by a Bidder to influence the OFDC's processing of Bids or award decisions may result in the rejection of his Bid.

### **14.3 Clarification of Financial Bids**

14.3.1 To assist in the examination, evaluation, and comparison of Bids, OFDC may, at his discretion, ask the lowest evaluated responsive bidder for clarification of his-Bid, including breakdowns of unit rates. The request for clarification and

the response shall be in writing or by cable/e-mail, but no change in the price or substance of the Bid shall be sought, offered, or permitted.

14.3.2 Subject to sub-clause 14.3.1, no Bidder shall contact the OFDC on any matter relating to his bid from the time of the bid opening to the time the contract is awarded. If the Bidder wishes to bring additional information to the notice of the OFDC, it should do so writing.

14.3.3 Any effort by the Bidder to influence the OFDC in the bid evaluation, bid comparison or contract award decisions may result in the rejection of the Bidders' bid.

## **15. Examination of Bids and Determination of Responsiveness**

15.1 During the detailed evaluation of "Technical Bids", OFDC will determine whether each Bid

- (a) meets the eligibility criteria defined in this document;
- (b) is accompanied by the required securities and;
- (c) is substantially responsive to the requirements of the Bidding documents.
- (d) Fulfilling the other technical requirements as specified elsewhere in the tender document
- (e) Is substantially responsive to the requirements of the Bidding documents. During the detailed evaluation of the "Financial Bid" of the lowest evaluated bidder, the responsiveness of the bids will be further determined with respect to the remaining bid conditions, i.e., priced bill of quantities, technical specifications, and drawings.

15.2 A substantially responsive "Financial Bid" is one which conforms to all the terms, conditions, and specifications of the Bidding documents, without material deviation or reservation. A material deviation or reservation is one (a) which affects in any substantial way the scope, quality, or performance of the Works; (b) which limits in any substantial way, inconsistent with the Bidding documents, the OFDC's rights or the Bidder's obligations under the Contract; or (c) whose rectification would affect unfairly the competitive position of other Bidders presenting substantially responsive Bids.

15.3 If a "Financial Bid" is not substantially responsive, it will be rejected by the OFDC, and may not subsequently be made responsive by correction or withdrawal of the non-conforming deviation or reservation.

15.4 OFDC will evaluate and compare only the Bids determined to be substantially responsive in accordance with this Clause.

15.5 The OFDC reserves the right to accept or reject any variation arising out of change in scope of work. Such variations, which are in excess of the requirements of the Bidding documents, shall not be taken into account in Bid evaluation.

## **15. Technical specifications**

A - Design, supply and erection of PEB Plant Building

### **A1- Design and supply of PEB Structural Materials**

1. After receipt of the work order from OFDC, following documents shall be submitted to the Managing Director, OFDC Ltd for approval
  - Structural design calculations including STADD,pro
  - Drawings along with Complete Bills of Material
2. Design calculations, checked and certified by Govt. Approved Structural Engineer or Agency, shall be submitted to OFDC for approval.
3. Vendor shall supply the structural materials such as columns, rafters, beams, purlins, tie rods, sheets, wall cladding/roofing PUF insulation, hardware etc to the site as per the OFDC approved drawings. Raw materials for steel sections, sheets etc shall be of reputed make.
4. Vendor shall also supply the hardware that are used for positioning and anchoring of the PEB structures to the RCC foundation plinth.
5. All the items shall be supplied directly to the project site.
6. Relevant clauses of "Detailed specification of PEB Plant Building section & Other Supply shall be adopted.

### **A2- Design and supply of PEB architectural items**

1. After receipt of the Work Order from OFDC, the Vendor shall submit GA drawings along with BOQ (item-wise description, quantity, make, model etc) of the architectural items.
2. The architectural items shall meet the requirements of various aspects of the room such as electrical, illumination, ventilation, exhaust, thermal, safety, security etc.
3. Accordingly, this shall include all items such as windows with Canopy shades & Grill, doors with shades/lock/key, rolling shutters with lock/key, ventilator provisions, exhaust provisions, rain water gutters/down comers/ pipes etc, Raw materials for steel sections, sheets etc shall be of reputed make, Vendor shall take prior approval from NIPER for the make prior to proceeding with procurement action.
4. Vendor shall supply the items directly to the project site.
5. Relevant clauses of "Detailed specification of PEB Plant Building" section shall be adopted.

### **A3- Erection of structures of PEB Plant Building:**

1. Vendor shall erect the structural items such as columns, rafters, beams, purlins, tie rods, sheets, wall cladding/roofing insulation, hardware etc as per the OFDC approved drawings / BoM.
2. Vendor shall also carry out necessary finishing activities such as painting etc.
3. Vendor shall deploy qualified/competent team at site to carry out the above erection activity.
4. Vendor shall also deploy their specialized team during plinth casting of J bolts with Foundation & Ground Civil Work.

5. All necessary labor, equipment, tools and tackles shall be in vendor scope of supply,
6. For the above, relevant clauses of "Detailed specification of PEB Plant Building" section & Other Supply shall be adopted.

**A4- Erection of architectural items of PEB Plant Building:**

1. Vendor shall carry out erection of the architectural items such as windows with shades, doors with shades/ lock/ key, rolling shutters with lock/ key, structural provisions for ventilators / exhausts, rain water gutters/ down comers/ pipes etc as per the OFDC approved drawings / BoM.
  2. Vendor shall also carry out necessary finishing activities such as painting etc.
  3. Vendor shall deploy qualified/competent team at site to carry out the above erection activities.
  4. All necessary labor, tools & tackles, shuttering materials, measuring instruments, machinery shall be in vendor scope of supply. This shall include spanner sets, drilling machines, welding machines, hydra, JCB, truck, trolley etc as required for the erection work,
  5. For the above, relevant clauses of "Detailed specification of PEB Plant Building" section & Other Supply shall be adopted
16. Detailed specification of PEB Plant Building
- 16.1 PEB Plant Building

The Plant Building shall be made of Pre-Engineered Buildings (PEB). The PEB shall be made of structural steel construction with double skinned metal roofing and wall cladding of approved profile. It shall be designed, manufactured, supplied and erected by the bidder/PEB agency. PEB Structure shall be complete with painting, metal fascia, metal gutter, rain water down comers, sun-shades, openings, etc., along with associated structural steel, cladding and roofing work insulation, Trims & Flashings, Each item of PEB like panels, masonry, plastering, flooring, foundation, fittings etc. shall be suitable for long life.

The successful bidder shall have to get the structural design done as per the prevailing Indian standard codes and international Standard. The structural design of PEB Plant Structure shall have to be proof checked by any GOVT. APPROVED ENGINEER OR AGENCY preferably from Dept of Works , Govt. of Odisha.

The architectural drawing of double skin insulated roofing & cladding system are given in the tender relevant Drawing (Pre Engineered Building Drawing No:) to provide general idea about work to be performed under the scope of the contract, The PEB shall have robust water tightness at all joints and connections, The building shall have a high class durability and performance during the adverse weather conditions.

## 16.2 Structure and material specification

As per standard norms

## 16.3 Fasteners & Connections:

As per standard norms

## 16.4 Roof and Wall cladding:

PUF panels shall be made of troughed permanently colour coated metal sheets of steel for roofing and sidecladding (internal and external) shall conform to the standard requirements , The insulation material thicknessand details shall be as per standard norms,

PUF insulated panels Metal Sheet for Roofing and side cladding consist of external sheet as troughedpermanently colour coated sheet & internal sheet as plain permanently colour coated sheet.

Chemical composition of Troughed permanently colour metal sheet for roofing and side cladding shallconform to the provisions of applicable standard ,

Plain permanently colour coated steel metal sheet for ridge and hips, flashing, trimming, closure for verticaland horizontal joints, capping etc, shall conform to the same requirements as those of troughed permanentlycolour coated metal sheet for roof and side cladding,

Fillers blocks as a trough filler shall be used to seal cavities formed between the profiled sheet and thesupport or flashing, The fillers blocks shall be manufactured from black synthetic rubber or any other material approved by engineer.

## 16.5 Roof Insulation and type:

Roof insulation material to be of applicable standard

## 16.6 Wall Insulation:

Both the walls should be separated by spacers system made up of cold formed steel bars and fastenedThrough zinc /zinc-tin coated self-drilling screws. The internal wall of Toilets & Wash Room area shall bestainless steel to prevent corrosion due to high water flow & Humidity,

## 16.7 Doors Frames:

Door frames shall be of C Section Powder Coated Iron frame of mild steel with Aluminum Door FrameSections. All doors shall be provided necessary fittings like hinges, handles, Handel locks, tower bolts,stopper, hydraulic door closer, etc, of Cp brass complete,

White/ Ivory powder coated aluminum doors shall be with extruded built up standard tubular sections, appropriate Z sections and other sections of approved make and standard quality.

#### 16.8 Windows Frame:

Window Frame shall be C Section fabricated from Stainless Steel Grade to Fit Aluminum White / Ivory powder coated section, frame as per approved design. Tinted glass and aluminum grill shall be provided.

#### 16.9 False Ceiling:

Supply and Installation of Tiles (Regular & Square edge) as specified & Approved by OFDC including providing & Fixing of suspended grid which is suitable for tiles

Note: Additional supporting arrangements, if required, shall be provided near openings for tight fittings diffusers etc. shall include making cut-outs for tube light, spot lights of specified size etc.,, shall also include for providing additional trimming around cut-outs for light fittings etc.,, and also for providing additional supports from ceiling where main/cross members are cut for light fittings etc.,

#### 16.10 Paint and Coating:

Steel shall be colour coated and of relevant Indian standard.

#### 16.11 Electrification & Lighting:

Vendor shall ensure that the room is designed to utilize maximum natural light during the day, Vendor shall also ensure that supply of Electric Fixtures for the room with electric lights to achieve average illumination as per OFDC Requirements. Vendor Shall Supply Fan & Light with Required Electrical Enclosures Switches Switch Board Distribution Board, Panels, Wires & Cables with Casing Capping & all other relevant Accessories,

#### 16.12 Design Parameters and Design Loads:

The structure shall be designed for loads and load combination as per Indian Standards (latest revisions) .

Dead Load: Self Weight of Structure including Purlins, Sheeting, Girts, Bracings, weight of turbo ventilators to be added as Dead load etc.

Earthquake Load: All PEB structures shall be designed for Seismic forces,

#### 16.13 Descriptions of PEB Structures:

**Primary Members:** Primary structural framing shall include the transverse rigid frames, columns, corner, columns, end wall wind columns, beams, truss member, base plate.

**Secondary Members:** Secondary structural framing shall include the purlins, girts, eave struts, bracing, flange bracing, base angles, clips, flashings and other miscellaneous structural parts, Suitable wind bracings sag rods to be reckoned while designing the structure.

**Sealant:** Sealant used for cladding shall be butyl based two parts poly sulphide or equivalent approved, no staining material and be flexible enough not to interface with fit of the sheets.

**Closures:** Solid or closed cell closures matching the profiles of the panel shall be installed along the eaves, rake and other locations.

**Flashing and Trim:** Flashing and / or trim shall be furnished at the rake, corners, eaves, and framed openings and wherever necessary to provide weather tightness and finished appearance, Color shall be matching with the color of wall. Material shall be 26 gauge thick conforming to the physical specifications of sheeting,

**Gutters and Down Comers:** Gutters shall be fabricated out of same metal sheet, Material shall be Same as that of sheeting, Down comers shall be of galvanized steel pipes or PVC designed to ensure proper roof drainage system,

All steel materials supplied by the Agency shall be in a sound condition, of recent manufacture, free from defects, loose mill scale, slag intrusions, laminations, pitting, flaky, rust, etc. and be of full weight and thickness specified.

## **17 Civil Work for PEB Plant Building**

**Brick Masonry Work :**

Brick work using bricks as specified in cement mortar 1:6 at and at all depths /heights above/below plinth level in foundation, superstructure in line, level and plumb, raking out joints above ground level and simultaneous pointing below ground level, curing steel scaffolding wherever required etc., complete as specified and directed in super structure;

**. Flooring Work:**

Non-Skid Ceramic tile flooring, dado/skirting using 6 mm/9mm thick ceramic tiles of sizes as mentioned below, glossy or matt finish, of 1st quality as approved by OFDC.

**. Storm Water & Sewage Drainage :**

Providing and fixing / laying with necessary clamps or embedded in floor / concealed in walls approved quality PVC rain water pipes and fittings of standard quality.

Sanitary Fitting & Fixtures :

Providing and fixing sanitary fittings and fixtures of applicable standards of OFDC

## **18 Detailed specification of Electrification Work**

### Scope of Work

The contractor's scope for this tender shall include supply, Installation, Testing and electrical commissioning of entire system as per applicable standard and requirement of OFDC. Scope of Work shall include supply, installation, testing and commissioning of all equipment and systems to meet the requirement defined in specifications, data sheets and drawings attached with the tender and required for completion of the job including but not limited to

The following works are in the scope of work of this tender:

FRLS PVC Copper Cable: Supply, installation, testing and commissioning of 3 1/2core | 4core / 3 core/ 2 core FRLS PVC insulated copper conductor cable for power distribution to various equipments.

Lightning Protection system: supply, installation, testing and Commissioning of horizontal and down conductors and providing of test link boxes for connecting to earth pits and related works.

Power and Lighting system: Supply, installation, testing and commissioning of power and lighting wiring, socket outlets, lighting fixtures, etc.

Communication System: Supply, installation, testing and commissioning of OFC and CAT6 cables and termination on patch panels and related works.

Documentation: Preparation of As-Built drawings, supply of service Manuals, etc.

Liaison Work: All liaison work with documentation, test certificates, co-ordination with concerned authorities for obtaining permission to commission the entire system,

Other Works: All other works which might not have been specifically mentioned in the specifications and in schedule of quantities but are essential for operational requirement of the entire system shall be in the scope of work.

### General:

All the supply and work shall be in accordance with the relevant I. S. Specification and recognized standards and modern approved practice and shall meet the requirement of the latest issue of applicable codes, factory rates and regulations, supply codes and all standard accepted practice in locality where the installation is to be made. All the materials and accessories provided by Contractor under terms of this contract shall conform to the relevant Indian Standard Specifications. Samples of all equipment, materials and accessories to be supplied by the Contractor shall be submitted for the approval of the OFDC



before they are supplied and used. Contractor shall provide all necessary labour, tools, and other requisite work like drilling, cutting, welding etc' at his own cost. Good workmanship is the essence of this contract and shall be complied with at all time. The Contractor shall have the works supervised by qualified and experienced engineers, All the defects pointed out by the engineer shall be rectified immediately by the contractor free of cost. The installation shall generally be carried out strictly in conformity with the requirement of latest edition of the Indian Electricity Act, 2003 and Indian Electricity Rules 1956 and all others statutory regulations that may be relevant to the installation. No alteration which may affect the structures and architecture of building shall be done without the prior approval of the engineer. All work shall be carried out in such a manner that it should not cause any inconvenience to other works which are under progress' The Contractor shall co-operate with other agencies in the area for the smooth execution of all works' Accidental damage to any property shall be reported immediately to Jurisdictional Divisional Manager of OFDC and later confirmed in writing,

#### **19. General conditions applicable during supply, installation and commissioning phase**

Vendor shall organize construction power supply on their own. Accordingly, if required, DG sets of suitable capacity shall be deployed by the vendor for construction works,

Similarly, water required for construction works shall be arranged by the vendor through water tankers.

All machinery such as cranes, hydra, JCBs, forklifts, transport trucks, trolleys, concrete mixers, Ajax machines etc. necessary for movement and installation of materials shall be organized by the vendor,

All necessary tools and tackles such as screw driver set, power screw drivers, cutting pliers, nose pliers, spanner sets, adjustable spanners, hole saw cutter set, bending tools, torque wrenches, hack saw blades, pipe wrenches, flat / round files, drilling machines, welding machines, steel bar bending tools / templates for RCC works, spade, shovel, hammer etc shall be organized by the vendor.

All necessary measuring instruments such as measuring tapes, digital millimeters, electrical testers, meggers etc shall be organized by the vendor.

Vendor shall make their own arrangements for necessary food, drinking water and accommodation for their labour and employees posted at the site. Similarly, food and drinking water required at the site, during the construction operations, shall also be in scope of vendor.

Vendor shall organize all necessary steps to meet statutory requirements such as labour license, PF,ESI, insurance etc and also ensure compliance with

relevant acts such as minimum wages act, income tax act, employee insurance act etc for their labour deployed at site.

Vendor shall organize activities such as receipt of all supply items of PEB rooms at site, unloading from the trucks, safe storage at site, movement from storage location to point of construction etc. Vendor shall deploy their own security watch and ward to safeguard their supply items from pilferage, Insurance for the supplied items until the completion of erection of all the PEB rooms shall be the responsibility of vendor.

Vendor shall maintain updated labour register, with name, age, qualification, salary, attendance details etc at the site.

Vendor shall use danger boards, wherever required, to ensure safety of the persons during the work at site

Vendor shall adhere to all necessary safety norms such as use of helmet, goggles, hand gloves, gumboots, aprons etc. It is the ultimate responsibility of the vendor in all respect to prevent accidents at the site and safeguard their labour from accidents.

Vendor shall, at the completion of every work, clear off the debris, which resulted out of the work.

Vendor shall carry out the work without causing inconvenience to other contract groups at the site. In case of conflicts with other groups, vendor shall ensure that the matter is resolved at once amicably so that the progress of work is not affected, Any damages on the other buildings, structures etc of the site, if attributable to the acts of labor employees of vendor, shall be rectified and made good by the vendor at their own cost,

**No child labour shall be employed for execution of the present contract as per child labour prohibition act..**

Any miscellaneous materials, which are found essential for technical completion of the contract but not mentioned explicitly in this specification, shall be deemed to be included in the specification, Accordingly, such materials shall be included by the vendor as part of the offer

OFDC shall witness routine / acceptance tests performed at manufacturer works for the items supplied by vendor,

Vendor shall accordingly provide inspection call to OFDC with submission of quality assurance plan in advance.

For the items bought out from dealers, test certificates, as per relevant IS / IEC standards, as issued by manufacturer shall be submitted to OFDC. However, prior approval shall be obtained from OFDC for procurement of the item from dealers.

**20. Field Quality Plan / Quality control system:**

Vendor shall make arrangements for testing of all construction materials in accordance with FQP (Field quality control plan) as approved by OFDC, If required for this purpose.

Any deviations during construction shall be discussed with the authorized officials of OFDC and implementation shall be taken up only after approval from OFDC

Vendor shall submit periodic status report, on daily as well as weekly consolidated basis, to OFDC on the progress of the contract.

**(Signature of Bidder)**

**with SEAL**

## Annexure-I

### DECLARATION BY THE BIDDER

(to be submitted under the official letter head)

I/we

\_\_\_\_\_ (hereinafter referred to as the Bidder) being desirous of tendering for the work and having fully understood nature of the work and having carefully noted all the terms and conditions, specification etc. as mentioned in the tender document, do hereby declare that

1. The Bidder is fully aware of all the requirements of the tender document and agrees with all provisions of the tender document.
2. The Bidder is capable of executing and completing the work as required in the tender.
3. The Bidder accepts all risks and responsibilities directly or indirectly connected with the performance of the tender.
4. The Bidder has no collusion with other Bidder, any employee of OFDC Ltd or with any other person or firm in the preparation of the bid.
5. The Bidder has not been influenced by any statement or promises of OFDC Ltd or any of its employees, but only by the tender document.
6. The Bidder is financially solvent and sound to execute the work.
7. The Bidder is sufficiently experienced and competent to perform the contract to the satisfaction of OFDC Ltd .
8. The information and the statements submitted with the tender are true.
9. The Bidder is familiar with all general and special laws, acts, ordinances, rules and regulations of the Municipal, District, State and Central Government that may affect the work, its performance or personnel employed therein.
10. The Bidder has never been debarred from similar type of work by OFDC Ltd and or Government undertaking/ Department.
11. This offer shall remain valid for acceptance for 12 Months from the date of opening of the tender.
12. The Bidder gives the assurance to execute the tendered work as per specifications terms and conditions
13. The quote to supply the goods and materials specified in the underwritten schedule in the manner in which and within the time specified as set forth in the conditions of contract at the rates given in the financial bid.

**(Signature of Bidder)**

**with SEAL**

**Annexure-II**

**Format for forwarding/covering letter**

**To be submitted by tenderers on the official letterhead**

No.....Date:.....

To,

The Managing Director

Odisha Forest Development Corporation Limited

A/84 Kharavel Nagar, Unit-III

Bhubaneswar, Odisha-PIN-751001

**Subject:- Offer in response to Notice Inviting Tender No. for Turnkey Construction of Honey Processing Units and Staff Barrack at Jajpur Road, Odisha**

Sir,

We hereby submit our offer in full compliance with terms & conditions of the above tender. A blank copy of the tender, duly signed on each page is also submitted as a proof of our acceptance of all specifications as well as terms/ Conditions.

We confirm that, we have the capability to Complete the Construction within .... months from the date of issuance of the work order by the OFDC.

The tender is submitted in two separate and sealed envelopes marked Part-I &Part-II.

**(Signature of Bidder)**

**With Seal**

**Annexure-III**

**DETAILS OF THE SIMILAR WORKS COMPLETED IN LAST THREE YEARS**

S. No.	Description of the Work with Contract No.	Name and address of the Employer with Contact No.	Date of award	Stipulated date of completion	Date of actual completion	Value of completed work (In Rs lacs)	Reasons for delays, penalty if any	Any other relevant information
1								
2								
3								
4								
5								
6								

Note:

1. The Bidder shall submit the attested Copies of the Completion Certificates from the Client.
2. The value of work executed should be inclusive of the value of free supply items.

**Signature of Authorized Signatory**

**Name** \_\_\_\_\_

**Designation** \_\_\_\_\_

**Company seal** \_\_\_\_\_

**Signature of Chartered Accountant with seal**

**Name** \_\_\_\_\_ **M.No.** \_\_\_\_\_

\_\_\_\_\_

Annexure-IV

**INFORMATION IN SUPPORT OF MEETING ESSENTIAL ELIGIBILITY CONDITIONS REGARDING ANNUAL TURNOVER OF THE BIDDER IN THREE FINANCIAL YEAR i.e. 2014-15, 2015-16 and 2016-17.**

Name of the Firm \_\_\_\_\_

Address \_\_\_\_\_

Contact Number \_\_\_\_\_

S.No.	Financial Year	Turn Over ( Rs. In lacs)
1.	2014-15	
2.	2015-16	
3	2016-17	
	<b>TOTAL</b>	

Signature of Chartered Accountant with  
seal

Name \_\_\_\_\_

M.No. \_\_\_\_\_

**GENERAL PARTICULARS OF BIDDER**

1	Name of firm	
2	Postal Address	
4	Telephone, Telex, Fax No	
5	E-mail	
6	Web site	
7	Name & designation of the authorized signatory to whom reference shall be made	
8	Present activities/business of the firm (whether Module Manufacturer/PCU Manufacturer/ PV System Integrator/ Electrical Contractor etc)	
9	Type of organization (whether Pvt. Ltd Company/Public Ltd Company/ Other Category	
10	GSTIN of the Bidder	
11	Ernest Money Deposit Details	DD No._____ dated_____ Bank_____ Payable at.....
12	Tender fee of Rs. 11000/-	DD No._____dated_____ Bank_____ Payable at_____ Or OFDC receipt No._____ dated_____

Name:

Designation and company seal:



## FINANCIAL BID

Sl. No	Description	Amount in Rs.
1	<p style="text-align: center;"><b>Construction of Pre-engineered structure, water supply and sewerage system external and Internal Electrification work for the proposed Honey Processing Plant, RTS Juice Manufacturing Plant and R.O Plant and Staff Barrack at Jajpur Road, Odisha arrived at as per enclosed BoQ</b></p>	<p>Rs. _____</p> <p>Rupees in Words( _____ )</p> <p>_____</p> <p>_____ )</p>

Place of Billing: \_\_\_\_\_

**Note; The BoQ with rate on the basis of which price is arrived at is to be enclosed alongwith the Financial Bid and will form part of the financial bid.**

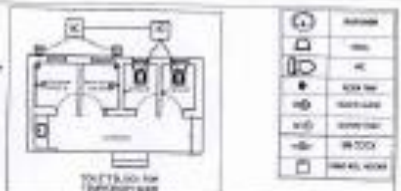
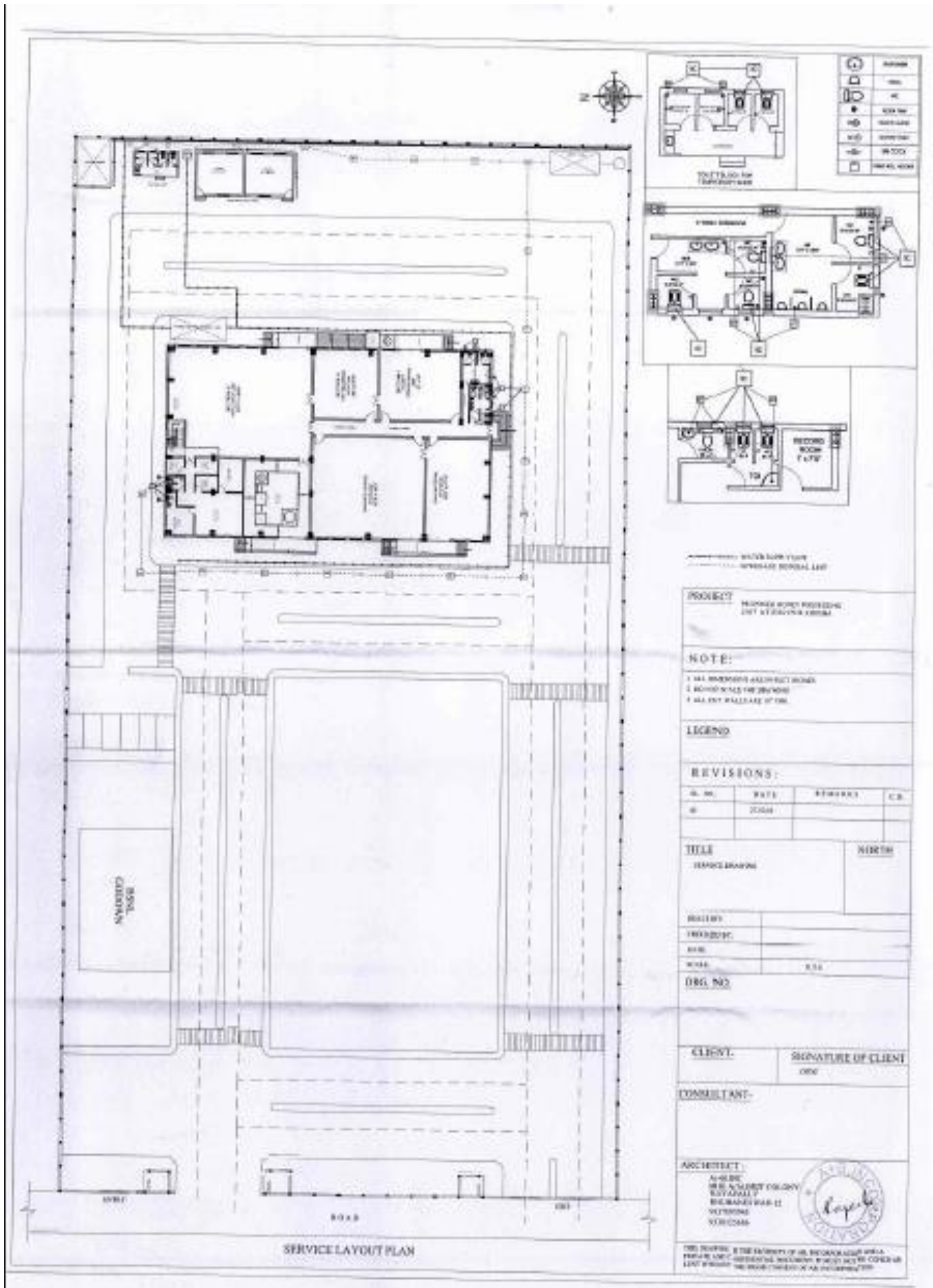
**Signature of Authorized Signatory**

**Name**

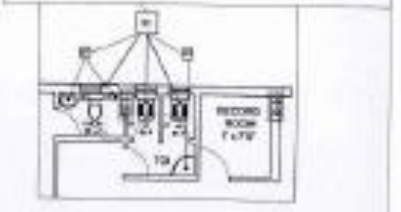
\_\_\_\_\_

**Designation** \_\_\_\_\_

**Company seal** \_\_\_\_\_



	AIRLINE
	WC
	WASH BASIN
	SINK
	SHOWER
	WATER TAP
	HOT WATER



----- WATER SUPPLY LINE  
 - - - - - SEWERAGE DISPOSAL LINE

**PROJECT:** HUMAN WASTE DISPOSAL UNIT AT JALPAIGURI

**NOTE:**  
 1 ALL DIMENSIONS ARE IN METERS  
 2 ROOMS SHALL BE OPENED  
 3 ALL EXIST WALLS ARE TO REMAIN

**LEGEND**

**REVISIONS:**

S. NO.	DATE	REMARKS	C.B.
1	2024		

**TITLE:** REPAIR WORK  
**SCALE:** NORTH

**DESIGNER:**  
**DATE:** 8/24

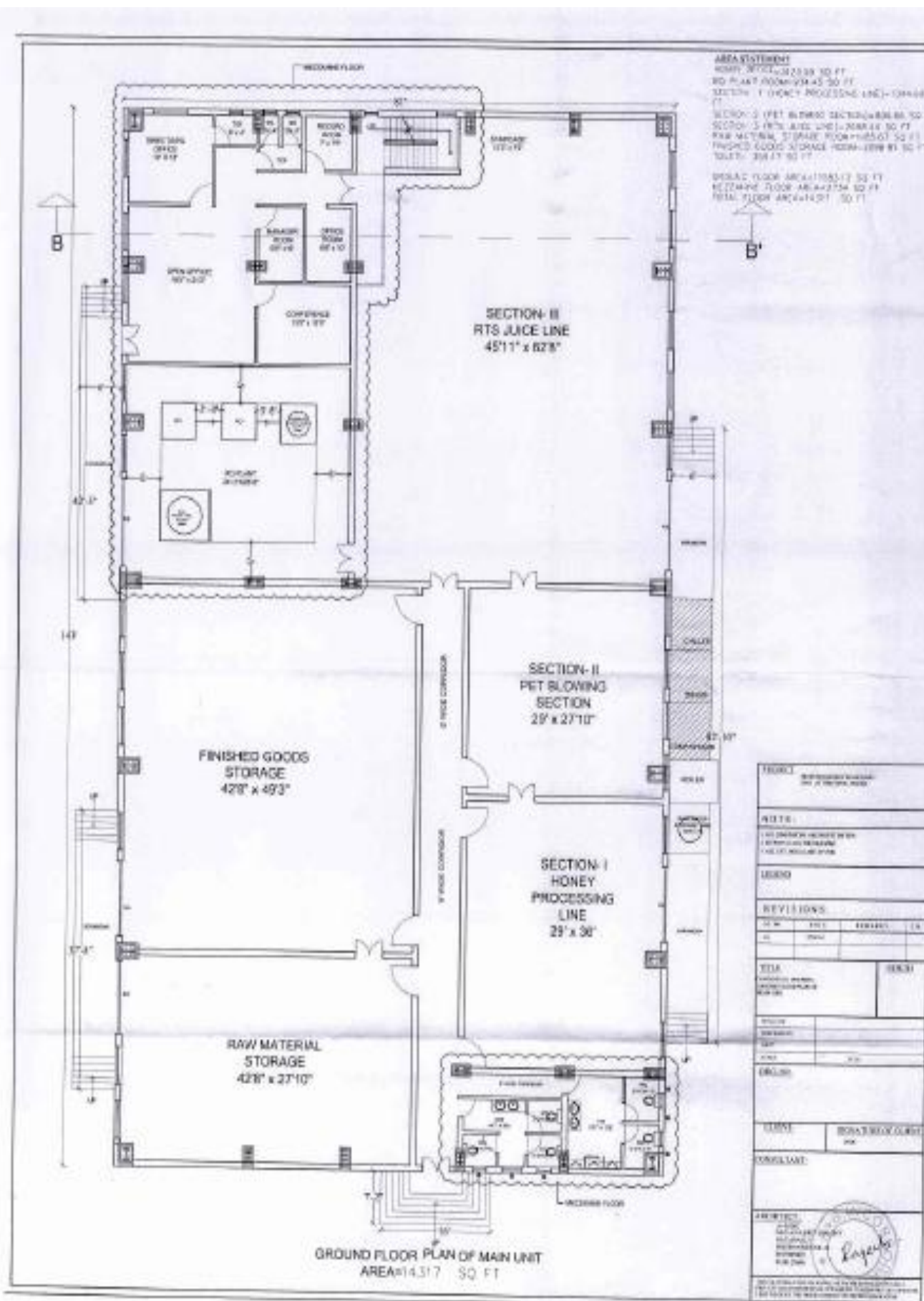
**CLIENT:** SIGNATURE OF CLIENT  
 \_\_\_\_\_

**CONSULTANT:**

**ARCHITECT:**  
 M. S. SINGH  
 M. S. SINGH & CO. ARCHITECTS  
 10/1, BANGALORE ROAD  
 1ST FLOOR, BANGALORE  
 KARNATAKA  
 INDIA



THIS DRAWING IS THE PROPERTY OF M. S. SINGH & CO. ARCHITECTS. IT IS TO BE USED ONLY FOR THE PROJECT AND SITE SPECIFICALLY MENTIONED THEREIN. NO PART OF THIS DRAWING IS TO BE REPRODUCED OR TRANSMITTED IN ANY FORM OR BY ANY MEANS, ELECTRONIC OR MECHANICAL, WITHOUT PERMISSION IN WRITING FROM M. S. SINGH & CO. ARCHITECTS.

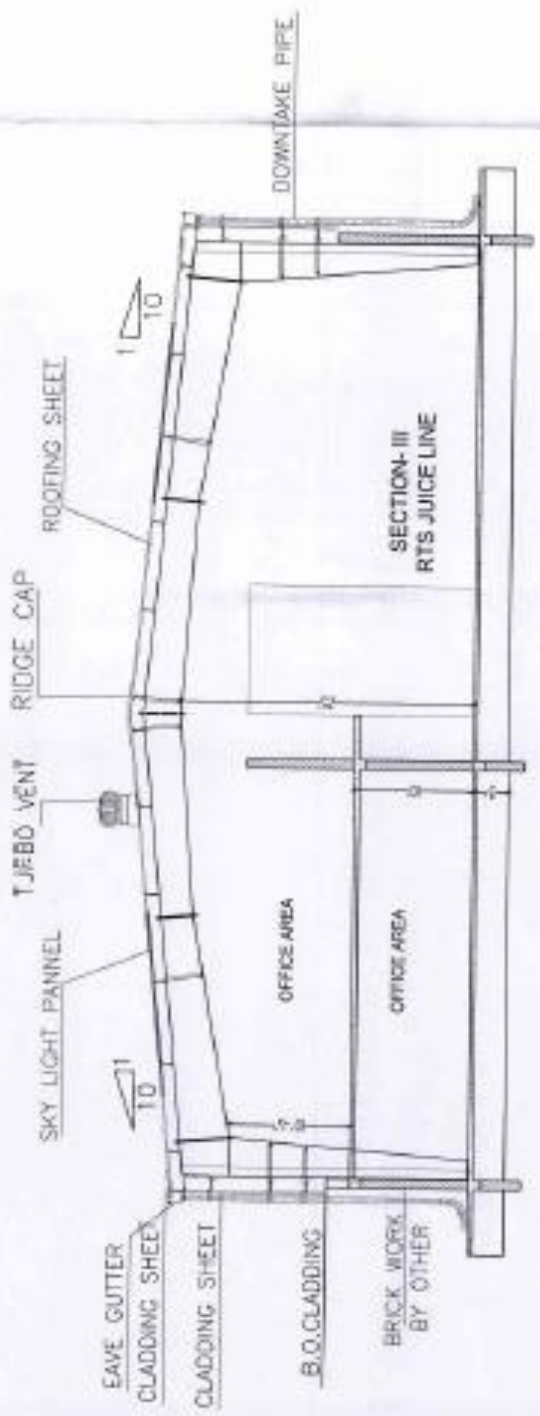


**AREA STATEMENT**  
 HONEY SECTION 2339 SQ FT  
 RTJ PLANT ROOM 23443 SQ FT  
 SECTION I (HONEY PROCESSING LINE) 13944 SQ FT  
 SECTION II PET BLOWING SECTION 836 SQ FT  
 SECTION III (RTS JUICE LINE) 20884 SQ FT  
 RAW MATERIAL STORAGE ROOM 10560 SQ FT  
 FINISHED GOODS STORAGE ROOM 10898 SQ FT  
 TOTAL: 39447 SQ FT

DESIGN FLOOR AREA 110617 SQ FT  
 MECHANICAL FLOOR AREA 2754 SQ FT  
 TOTAL FLOOR AREA 113371 SQ FT

**GROUND FLOOR PLAN OF MAIN UNIT**  
 AREA 114317 SQ FT

TITLE: <b>PROPOSED HONEY RTJ PLANT MAIN UNIT</b>			
DATE: _____			
SCALE: _____			
KEY: _____			
REVISIONS:			
NO.	DATE	DESCRIPTION	BY
DRAWN BY: _____			
CHECKED BY: _____			
DATE: _____			
PROJECT: <b>BONA BEEHIVE UNIT</b>			
CONSULTANT: _____			
APPROVED: _____ PROJECT ENGINEER REGISTERED PROFESSIONAL ENGINEER NO. 2048			

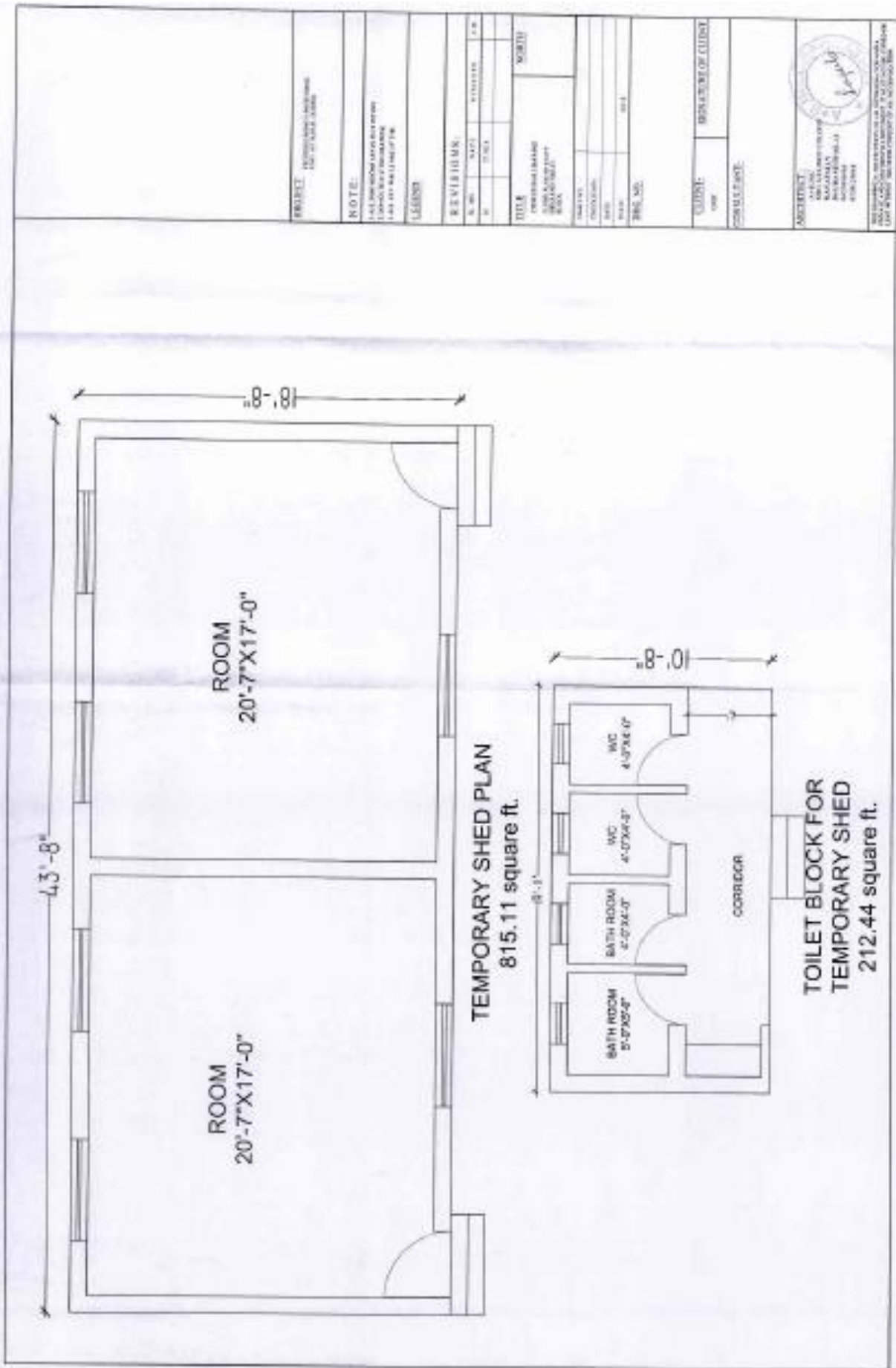


SECTION B-B

PROJECT: <b>RECONSTRUCTION OF 11000000</b>		
NOTE: 1. ALL DIMENSIONS ARE IN FEET AND INCHES 2. UNLESS OTHERWISE SPECIFIED 3. ALL WORK SHALL BE IN ACCORDANCE WITH THE LATEST EDITIONS OF THE		
REVISIONS:		
NO.	DATE	DESCRIPTION
1	01/11/2011	ISSUED FOR PERMIT
2	01/11/2011	ISSUED FOR PERMIT
TITLE: <b>RECONSTRUCTION OF 11000000</b>		
SCALE: <b>AS SHOWN</b>		
DESIGNED BY: <b>AS SHOWN</b>	CHECKED BY: <b>AS SHOWN</b>	
DRAWN BY: <b>AS SHOWN</b>	DATE: <b>01/11/2011</b>	
JOB NO. <b>11000000</b>		
CLIENT: <b>11000000</b>	CONSULTANT: <b>11000000</b>	



REGISTERED PROFESSIONAL ENGINEER  
 STATE OF FLORIDA  
 NO. 11000000  
 EXPIRES 12/31/2011  
 11000000  
 11000000  
 11000000



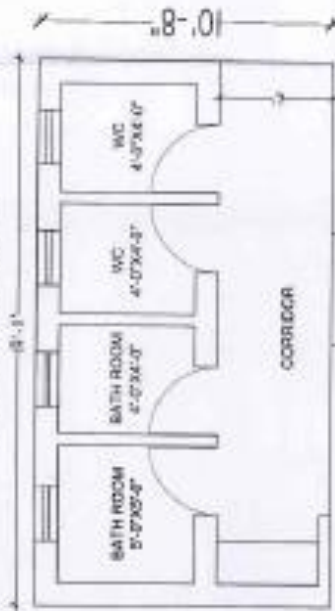
43'-8"

ROOM  
20'-7"X17'-0"

ROOM  
20'-7"X17'-0"

8'-8"

**TEMPORARY SHED PLAN**  
815.11 square ft.



8'-0"

BATH ROOM  
5'-7"X5'-0"

BATH ROOM  
5'-7"X5'-0"

WC  
4'-0"X5'-3"

WC  
4'-0"X5'-3"

WC  
4'-0"X5'-0"

CORRIDOR

**TOILET BLOCK FOR  
TEMPORARY SHED**  
212.44 square ft.

<b>PROJECT:</b> INTERNATIONAL TRADE CENTER 2200 SOUTH AVENUE WASH DC
<b>NOTE:</b> 1. ALL DIMENSIONS ARE IN FEET AND INCHES 2. DIMENSIONS SHALL BE AS SHOWN 3. SEE ALL NOTES AND DETAILS
<b>LEGEND:</b>
<b>REVISIONS:</b>
NO. DATE REVISION
<b>TITLE:</b> COMMERCIAL TRADING CENTER TEMPORARY SHED PLAN
<b>DATE:</b> 10/15/14
<b>DESIGNED BY:</b> M. J. ...
<b>CHECKED BY:</b> M. J. ...
<b>SCALE:</b> AS SHOWN
<b>SHEET NO.:</b> 014
<b>CLIENT:</b> BANK OF AMERICA
<b>PROJECT NAME:</b> BANK OF AMERICA
<b>ARCHITECT:</b> M. J. ...
<b>10/15/14</b>
<b>10/15/14</b>
<b>10/15/14</b>



LIST OF SUGGESTIVE MATERIALS		
SL NO	ITEMS	MAKE/ BRANDS/SPECIFICATIONS
<b>A</b>	<b>Civil Items</b>	
1	Cement for all works	43 grade & Confirming to IS Standards (ACC, KONARK, ULTRA-TECH)
2	Steel	Thermo-Mechanically Treated bars (TATA, SAIL, ELECTRO STEEL)
3	Bricks for Masonry	Flyash Bricks 25cmx12cmx6cm size having crushing strength not less than 75kg/cm <sup>2</sup> with dimensional tolerance $\pm 2\%$
4	Coarse aggregate to be used for P.C.C. Work	
a	40mm size Aggregates	The aggregates should be crusher broken granite chips of size 40mm.
5	Coarse aggregate to be used for R.C.C. Work	
a	20mm size Aggregates	The aggregates should be crusher broken granite chips of size 20mm. (Minimum 65% by wt. passing through 19mm sieve and retained on 13.2mm sieve but whole should pass through 26.5mm sieve)
b	10mm size Aggregates	The aggregates should be crusher broken granite chips of size 10mm. (Minimum 65% by wt. passing through 9.5mm sieve and retained on 6.3mm sieve but whole should pass through 13.2mm sieve)
5	Sand	The sand should be screened and washed for mortar
6	Wood	
a	Planks/Scantling to be used for shuttering	Tantera, Kasi, Gamhari, Kuruma
7	Vitrified Tiles	Polished Vitrified floor tiles of premium grade having thickness 8mm to 10mm confirming to IS 15622:2005 (Group-R Ia) of approved sizes Coloured (Printed series (Homogeneous)- (Make : NITCO, KAJARIA, RAK )
8	Ceramic Floor Tiles	Special plain/printed series of premium grade having thickness 7mm to 8mm confirming to IS 13755 - (Make : NITCO, KAJARIA, RAK )
9	Ceramic Wall tiles	Of premium grade having thickness 6.5mm to 6.7mm confirming to IS 13753 (Make : NITCO, KAJARIA, RAK )
11	Stainless Steel Work for Railing	Confirming to 304 grade
12	Weathercoat Paint	Berger/Asian Paint/Nerolac
13	Plastic Emulsion paint	Nerolac/Dulux/Asian
14	BWR Ply Board	Century/ARCHID/Green ply
15	Laminate	Royal Touch/Merino

16	Press Steel Choukath	Confirming to IS : 4351
17	Synthetic Enamel Paint	Confirming to ISI
18	PEB Structure	KIRBY, EVEREST, JSPL
<b>B</b>	<b>PH Items</b>	
1	CPVC Pipes	Supreme/Astral/Ashrivad
2	Water supply fittings (ball valve)	Supreme/Astral/Ashrivad
3	UPVC SWR Pipes	Type-A (Ringfit) Confirming to IS 13592/1992 (Supreme/Astral/Ashrivad)
4	UPVC SWR fittings Tees, Bends, Cows, P-trap, WC Connector etc.	Confirming to IS 14735 (Supreme/Astral/Ashrivad)
5	Odisha Pattern Water Closet	Hindware/Cera/Parryware
6	European Water Closet	Hindware/Cera/Parryware
7	Urinal	Hindware/Cera/Parryware
8	Urinal Partition	Jaquar or Equivalent
9	PVC Cistern	Hindware/Cera/Parryware
10	Wash Basin	Hindware/Cera/Parryware
11	All CP fittings	Hindware/Cera/Parryware
12	Over head water tank	Rotational moulded polyethylene cylindrical vertical water storage tanks confirming to IS:12701-1996
<b>C</b>	<b>Electrical Items</b>	
1	Switches, sockets, MS boxes	Schneider/Roma
2	Junction box	Any ISI marked approved manufacturer
3	Wires	RR Kabel/Polycab
4	Cable	Nico/CCI/KEI
5	MCB, Distribution box, Isolator, MCCB	L&T/Haggen/MDS-Legrand/Schneider/Siemens
6	Main Switch, 1 H.R.C. fuse. Changeover	L&T/Siemens/MDS-Legrand
7	P.V.C conduit pipe & accessories	kinjal/Bearly ( ISI mark )/AEI
8	Sockets	Dowels/Jhonson
9	Gland	Dowels/Jhonson
10	Volt meter, Ammeter	AE/Cappa
12	Phone wires	Finolex/Polycab/RR Kabel
13	TV cable	Finolex/RR Kabel

14	Light fixtures	Crompton/Bajaj/Philips
15	Lamps	Crompton/Philips/Bajaj
16	Ceiling Fan, Exhaust fan	Usha/Havells/Bajaj
20	MS conduit pipe	ISI marked
22	EPBX (Digital)	Coral/Clixo
<b>D</b>	<b>Fire Fighting Items</b>	
1	Photoelectric type Smoke Detector	GST
2	Heat Detector.	GST
3	Electronic Hooters (4 Watt).	Agni, gst
4	Manual Break Glass.	Agni, GST
5	4 Zone Fire Panel	Agni, GST
6	Response Indicator.	Agni
7	2 Core 1.5 mm <sup>2</sup> Un-armored Cable for Fire Alarm System.	Polycab, RR Kabel
8	CO <sub>2</sub> Fire Extinguishers - 5.0 Kg each	Eversafe
9	Water Fire Extinguishers – 9 ltrs each	Eversafe
10	Water with Additive Fire Extinguishers – 9 ltrs each	Eversafe



